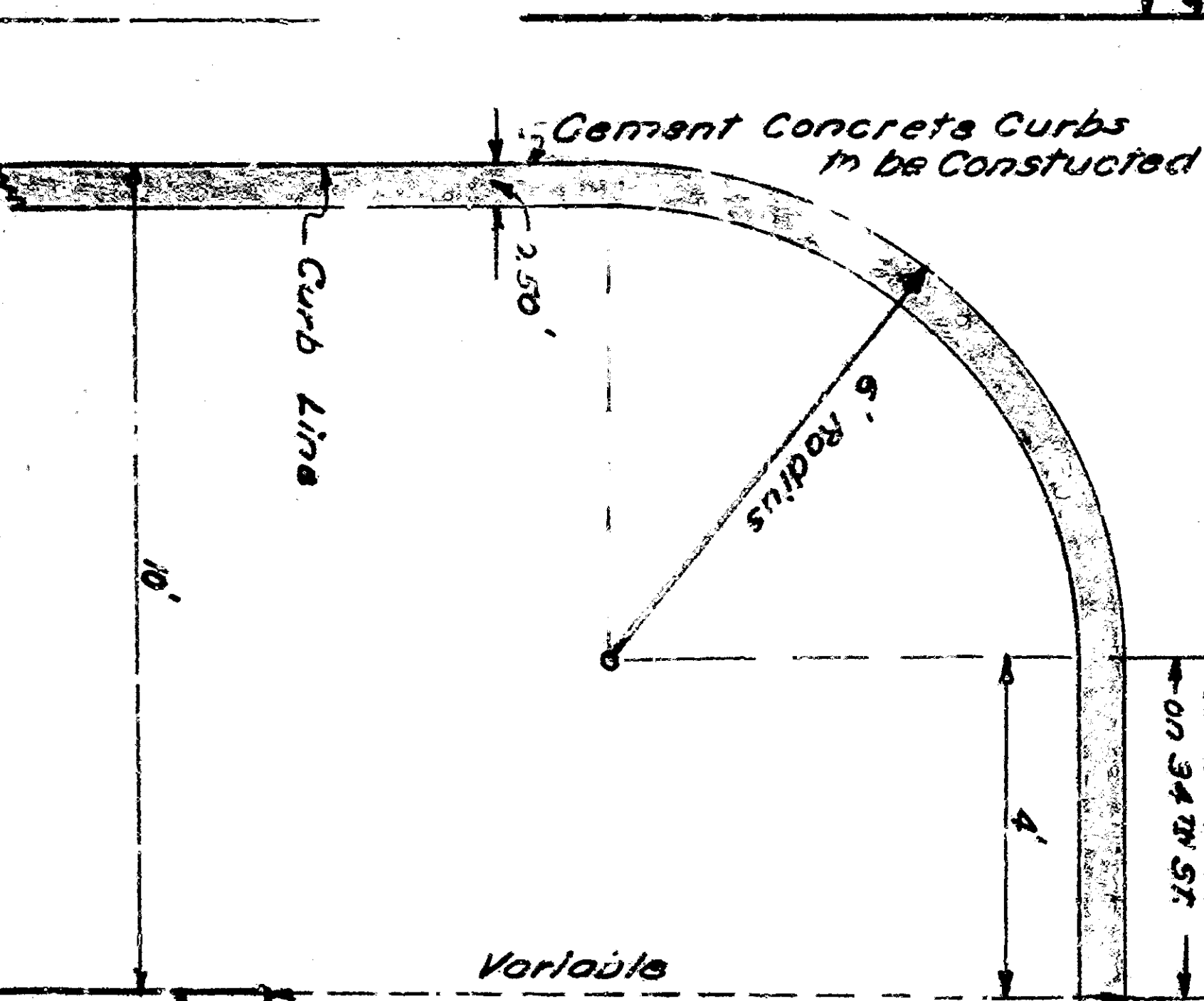


PLAN No 1850
FOR THE IMPROVEMENT OF
STODDARD AVENUE
BETWEEN
THIRTY-FOURTH STREET AND THIRTY-SIXTH STREET
IN THE
CITY OF SAN BERNARDINO
CALIFORNIA

JUNE 1949
R.D. FORSYTHE
Acting City Engineer

PLAN ADOPTED August 15, 1949.

- LEGEND**
- 10" means 10 inches
 - 12" means 12 inches
 - 18" means 18 inches
 - 24" means 24 inches
 - 30" means 30 inches
 - 36" means 36 inches
 - 42" means 42 inches
 - 48" means 48 inches
 - 54" means 54 inches
 - 60" means 60 inches
 - 66" means 66 inches
 - 72" means 72 inches
 - 78" means 78 inches
 - 84" means 84 inches
 - 90" means 90 inches
 - 96" means 96 inches
 - 102" means 102 inches
 - 108" means 108 inches
 - 114" means 114 inches
 - 120" means 120 inches
 - 126" means 126 inches
 - 132" means 132 inches
 - 138" means 138 inches
 - 144" means 144 inches
 - 150" means 150 inches
 - 156" means 156 inches
 - 162" means 162 inches
 - 168" means 168 inches
 - 174" means 174 inches
 - 180" means 180 inches
 - 186" means 186 inches
 - 192" means 192 inches
 - 198" means 198 inches
 - 204" means 204 inches
 - 210" means 210 inches
 - 216" means 216 inches
 - 222" means 222 inches
 - 228" means 228 inches
 - 234" means 234 inches
 - 240" means 240 inches
 - 246" means 246 inches
 - 252" means 252 inches
 - 258" means 258 inches
 - 264" means 264 inches
 - 270" means 270 inches
 - 276" means 276 inches
 - 282" means 282 inches
 - 288" means 288 inches
 - 294" means 294 inches
 - 300" means 300 inches
 - 306" means 306 inches
 - 312" means 312 inches
 - 318" means 318 inches
 - 324" means 324 inches
 - 330" means 330 inches
 - 336" means 336 inches
 - 342" means 342 inches
 - 348" means 348 inches
 - 354" means 354 inches
 - 360" means 360 inches
 - 366" means 366 inches
 - 372" means 372 inches
 - 378" means 378 inches
 - 384" means 384 inches
 - 390" means 390 inches
 - 396" means 396 inches
 - 402" means 402 inches
 - 408" means 408 inches
 - 414" means 414 inches
 - 420" means 420 inches
 - 426" means 426 inches
 - 432" means 432 inches
 - 438" means 438 inches
 - 444" means 444 inches
 - 450" means 450 inches
 - 456" means 456 inches
 - 462" means 462 inches
 - 468" means 468 inches
 - 474" means 474 inches
 - 480" means 480 inches
 - 486" means 486 inches
 - 492" means 492 inches
 - 498" means 498 inches
 - 504" means 504 inches
 - 510" means 510 inches
 - 516" means 516 inches
 - 522" means 522 inches
 - 528" means 528 inches
 - 534" means 534 inches
 - 540" means 540 inches
 - 546" means 546 inches
 - 552" means 552 inches
 - 558" means 558 inches
 - 564" means 564 inches
 - 570" means 570 inches
 - 576" means 576 inches
 - 582" means 582 inches
 - 588" means 588 inches
 - 594" means 594 inches
 - 600" means 600 inches
 - 606" means 606 inches
 - 612" means 612 inches
 - 618" means 618 inches
 - 624" means 624 inches
 - 630" means 630 inches
 - 636" means 636 inches
 - 642" means 642 inches
 - 648" means 648 inches
 - 654" means 654 inches
 - 660" means 660 inches
 - 666" means 666 inches
 - 672" means 672 inches
 - 678" means 678 inches
 - 684" means 684 inches
 - 690" means 690 inches
 - 696" means 696 inches
 - 702" means 702 inches
 - 708" means 708 inches
 - 714" means 714 inches
 - 720" means 720 inches
 - 726" means 726 inches
 - 732" means 732 inches
 - 738" means 738 inches
 - 744" means 744 inches
 - 750" means 750 inches
 - 756" means 756 inches
 - 762" means 762 inches
 - 768" means 768 inches
 - 774" means 774 inches
 - 780" means 780 inches
 - 786" means 786 inches
 - 792" means 792 inches
 - 798" means 798 inches
 - 804" means 804 inches
 - 810" means 810 inches
 - 816" means 816 inches
 - 822" means 822 inches
 - 828" means 828 inches
 - 834" means 834 inches
 - 840" means 840 inches
 - 846" means 846 inches
 - 852" means 852 inches
 - 858" means 858 inches
 - 864" means 864 inches
 - 870" means 870 inches
 - 876" means 876 inches
 - 882" means 882 inches
 - 888" means 888 inches
 - 894" means 894 inches
 - 900" means 900 inches
 - 906" means 906 inches
 - 912" means 912 inches
 - 918" means 918 inches
 - 924" means 924 inches
 - 930" means 930 inches
 - 936" means 936 inches
 - 942" means 942 inches
 - 948" means 948 inches
 - 954" means 954 inches
 - 960" means 960 inches
 - 966" means 966 inches
 - 972" means 972 inches
 - 978" means 978 inches
 - 984" means 984 inches
 - 990" means 990 inches
 - 996" means 996 inches
 - 1002" means 1002 inches
 - 1008" means 1008 inches
 - 1014" means 1014 inches
 - 1020" means 1020 inches
 - 1026" means 1026 inches
 - 1032" means 1032 inches
 - 1038" means 1038 inches
 - 1044" means 1044 inches
 - 1050" means 1050 inches
 - 1056" means 1056 inches
 - 1062" means 1062 inches
 - 1068" means 1068 inches
 - 1074" means 1074 inches
 - 1080" means 1080 inches
 - 1086" means 1086 inches
 - 1092" means 1092 inches
 - 1098" means 1098 inches
 - 1104" means 1104 inches
 - 1110" means 1110 inches
 - 1116" means 1116 inches
 - 1122" means 1122 inches
 - 1128" means 1128 inches
 - 1134" means 1134 inches
 - 1140" means 1140 inches
 - 1146" means 1146 inches
 - 1152" means 1152 inches
 - 1158" means 1158 inches
 - 1164" means 1164 inches
 - 1170" means 1170 inches
 - 1176" means 1176 inches
 - 1182" means 1182 inches
 - 1188" means 1188 inches
 - 1194" means 1194 inches
 - 1200" means 1200 inches
 - 1206" means 1206 inches
 - 1212" means 1212 inches
 - 1218" means 1218 inches
 - 1224" means 1224 inches
 - 1230" means 1230 inches
 - 1236" means 1236 inches
 - 1242" means 1242 inches
 - 1248" means 1248 inches
 - 1254" means 1254 inches
 - 1260" means 1260 inches
 - 1266" means 1266 inches
 - 1272" means 1272 inches
 - 1278" means 1278 inches
 - 1284" means 1284 inches
 - 1290" means 1290 inches
 - 1296" means 1296 inches
 - 1302" means 1302 inches
 - 1308" means 1308 inches
 - 1314" means 1314 inches
 - 1320" means 1320 inches
 - 1326" means 1326 inches
 - 1332" means 1332 inches
 - 1338" means 1338 inches
 - 1344" means 1344 inches
 - 1350" means 1350 inches
 - 1356" means 1356 inches
 - 1362" means 1362 inches
 - 1368" means 1368 inches
 - 1374" means 1374 inches
 - 1380" means 1380 inches
 - 1386" means 1386 inches
 - 1392" means 1392 inches
 - 1398" means 1398 inches
 - 1404" means 1404 inches
 - 1410" means 1410 inches
 - 1416" means 1416 inches
 - 1422" means 1422 inches
 - 1428" means 1428 inches
 - 1434" means 1434 inches
 - 1440" means 1440 inches
 - 1446" means 1446 inches
 - 1452" means 1452 inches
 - 1458" means 1458 inches
 - 1464" means 1464 inches
 - 1470" means 1470 inches
 - 1476" means 1476 inches
 - 1482" means 1482 inches
 - 1488" means 1488 inches
 - 1494" means 1494 inches
 - 1500" means 1500 inches



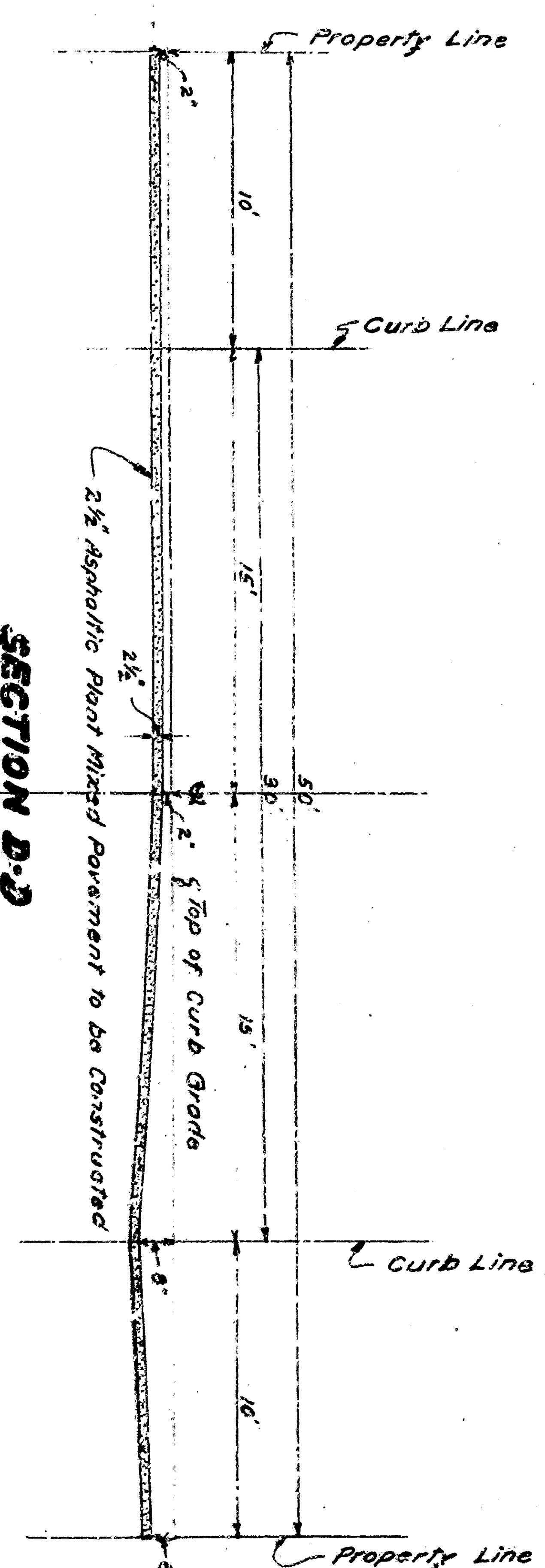
PLAN OF SECTION
Scale 1" = 20'

TITLE TO STREET
STODDARD AVENUE, a public street, located in the City of San Bernardino, California, and is hereby dedicated to the public use of the City of San Bernardino, California, and is hereby dedicated to the public use of the City of San Bernardino, California.

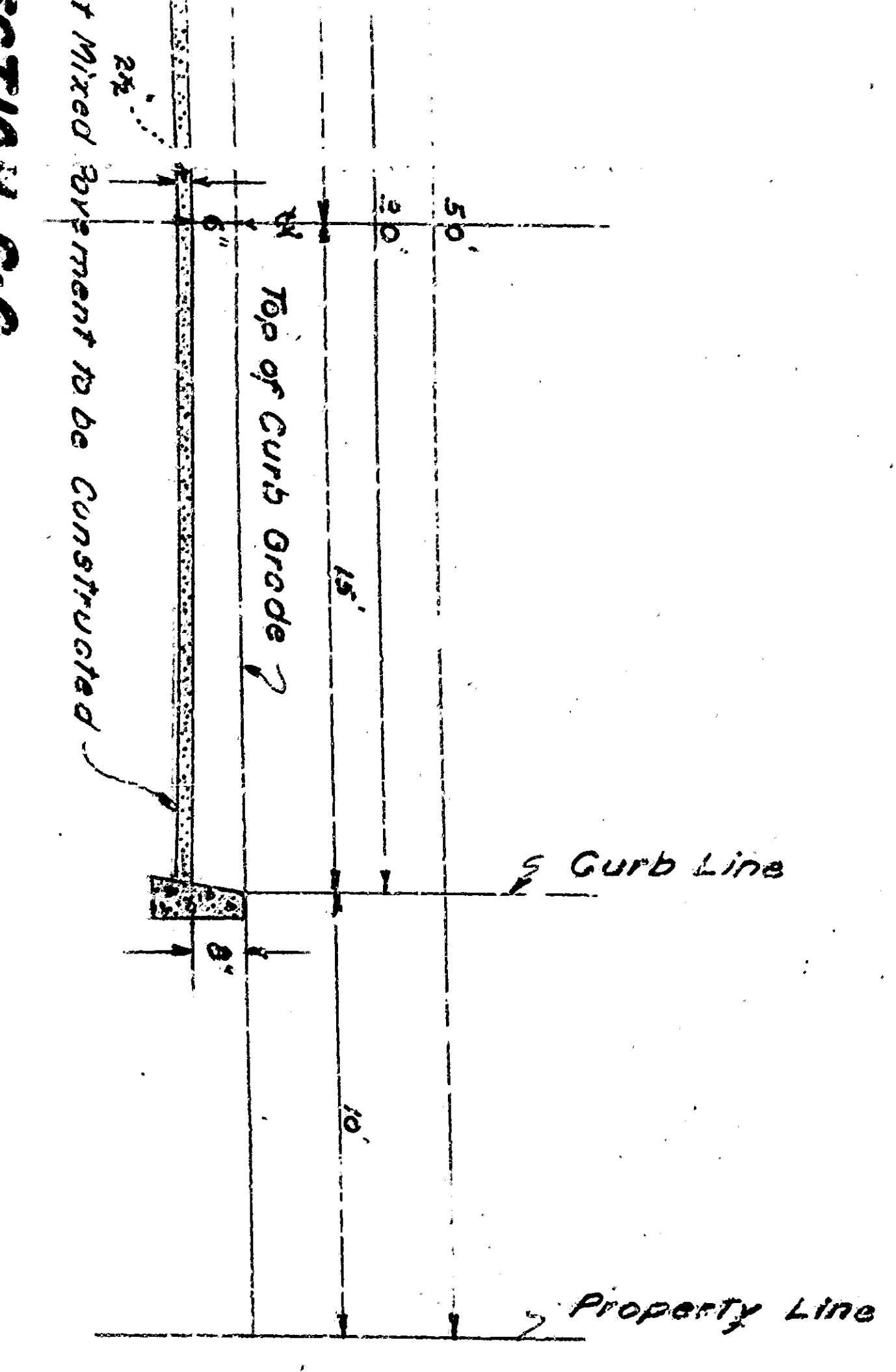
GRANT OF INTEREST
The City of San Bernardino, California, hereby grants to the City of San Bernardino, California, the right to use the land shown on the attached plan for the purpose of constructing and maintaining the public street shown on the attached plan.

FILED
AUG 15 1949
CITY ENGINEER

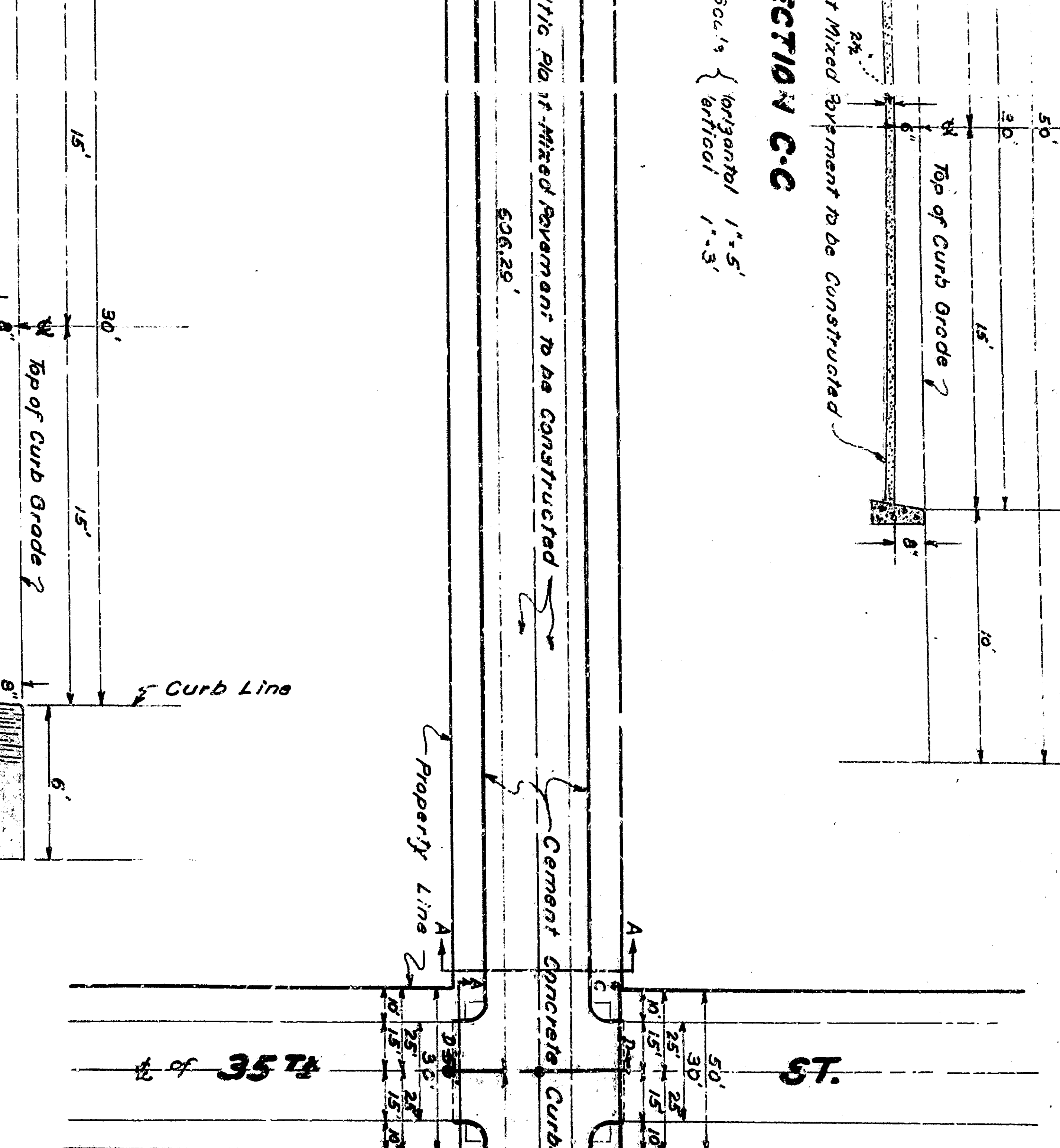
SECTION B-B
Scale (Horizontal) 1" = 5'
Scale (Vertical) 1" = 3'



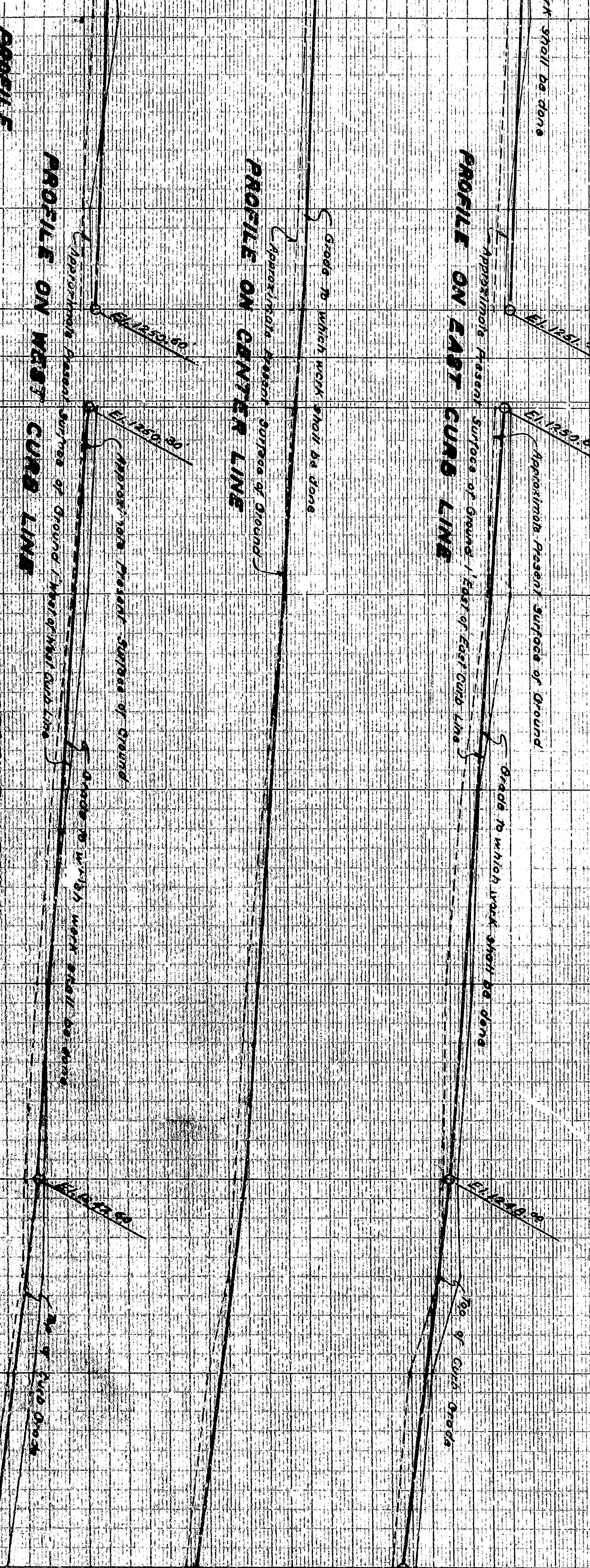
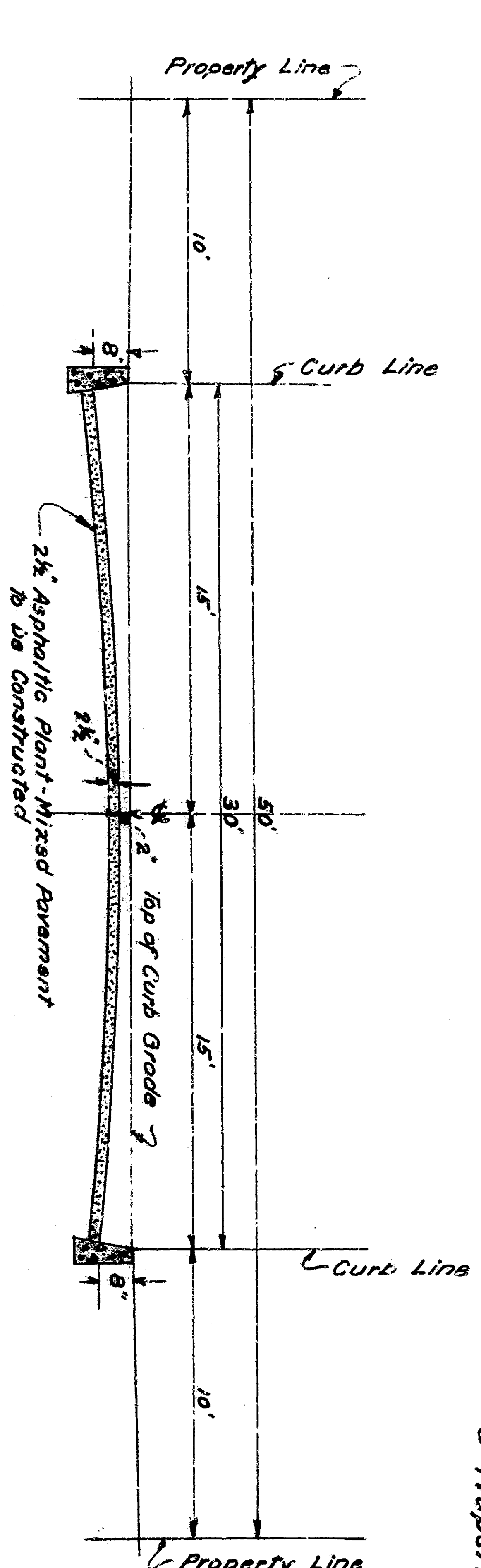
SECTION C-C
Scale (Horizontal) 1" = 5'
Scale (Vertical) 1" = 3'



PLAN
Scale 1" = 40'



SECTION A-A
Scale (Horizontal) 1" = 5'
Scale (Vertical) 1" = 3'



PROFILES
Scale (Horizontal) 1" = 40'
Scale (Vertical) 1" = 5'

DATE
This plan was prepared and adopted by the City of San Bernardino, California, on the 15th day of June, 1949.

APPROVED
CITY ENGINEER